

Vanish™ XT

Extended Contact Varnish

Fast
Sensitivity
Relief

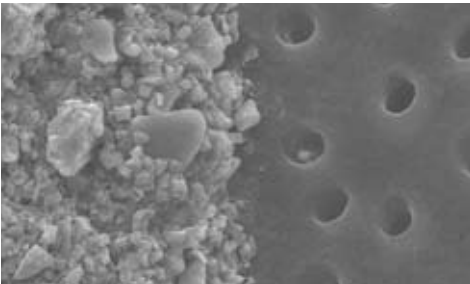


Slow Fluoride Release

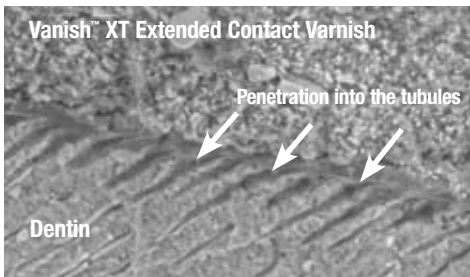


Introducing the protective barrier that immediately relieves sensitivity, delivers fluoride and lasts 6 months

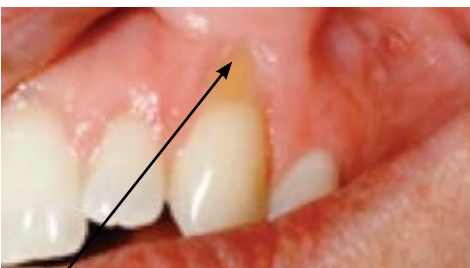
Vanish™ XT Extended Contact Varnish seals and protects dentin tubules



SEM image of exposed dentin tubules (right) and Vanish™ XT Extended Contact Varnish (left) at 3000x magnification illustrates the barrier effect



Cross-sectional SEM image of Vanish™ XT Extended Contact Varnish coated on dentin at 1000x magnification illustrates the resin tags penetrating the tubules



Vanish™ XT Extended Contact Varnish is virtually invisible when applied to the tooth surface

Vanish™ XT Extended Contact Varnish is a site-specific, light-cured durable coating that provides an immediate layer of protection to relieve dentinal hypersensitivity.

- Great for protecting exposed, sensitive root surfaces, especially newly cleaned surfaces following scaling & root planing
- Remains on the tooth for six months or longer
- Moisture tolerant: no need to dry or pre-treat the root surface
- Does not require the use of a rubber dam
- Delivers fluoride, calcium and phosphate

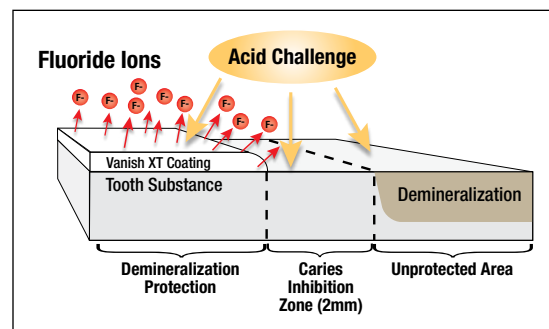
Vanish XT reduces dentin permeability by 88%¹

Occluding dentinal tubules in-office provides immediate relief from pain associated with the movement of fluid through open tubules. In addition to creating a protective layer on exposed dentin, Vanish XT has been shown to both penetrate and seal tubules. Laboratory testing demonstrates that Vanish XT reduces dentin permeability by 88%.

Vanish XT protects the tooth surface from acid attack

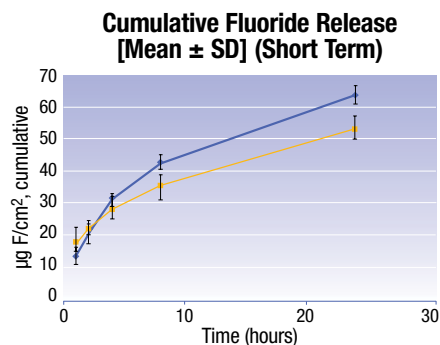
In vitro tests conducted with Vanish XT demonstrate that the coating:

- Creates a barrier against demineralization and acid erosion²
- Provides protection beyond the coating²
- Helps repair demineralized enamel adjacent to the coating³



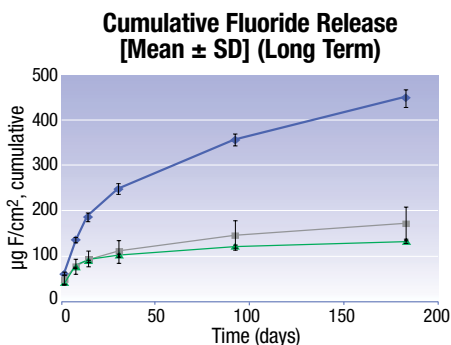
Long-Term Protection

Immediate Relief



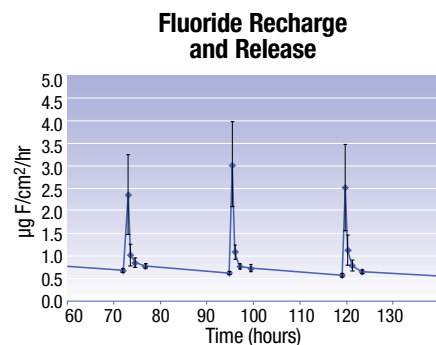
Legend: Vanish™ XT Extended Contact Varnish (blue line with diamonds), Conventional Fluoride Varnish (yellow line with squares)

In vitro testing shows Vanish™ XT Extended Contact Varnish releases more fluoride over 24 hours than a conventional varnish.



Legend: Vanish™ XT Extended Contact Varnish (blue line with diamonds), Glass Ionomer Sealant Material (grey line with squares), Fluoride-containing Resin Sealant (green line with triangles)

In vitro testing shows Vanish™ XT Extended Contact Varnish releases more fluoride over 6 months than other coatings.



Legend: Vanish™ XT Extended Contact Varnish (blue line with diamonds)

In vitro testing shows Vanish™ XT Extended Contact Varnish is recharged by brushing with fluoride toothpaste.

Source: 3M ESPE internal data

Vanish XT contains fluoride and is “recharged” by fluoride toothpaste

Vanish XT is a resin-modified glass ionomer material that releases fluoride, calcium and phosphate. This makes it unique versus other in-office desensitizers. In the first 24 hours, Vanish XT releases more fluoride than a conventional fluoride varnish. Plus, Vanish XT is recharged every time the patient brushes with fluoride toothpaste. Your patients not only get the protection of a physical barrier, they get the benefit of long-term fluoride delivery.

The Complete Solution – Check out the differences

Existing dental hypersensitivity relief products offer multiple benefits, but no other product offers all the advantages of Vanish XT Extended Contact Varnish.

	Immediate Sensitivity Relief	Long-Term Coating	Moisture Tolerant	Fluoride Release	Calcium Release
Vanish™ XT Extended Contact Varnish	✓	✓	✓	✓	✓
Glutaraldehyde-based Desensitizers (e.g. Gluma™, Calm-it)	✓	✓			
Resin-based Desensitizers (e.g. Seal & Protect™)	✓	✓			
Conventional Fluoride Varnishes (e.g. Duraphat™)	✓		✓	✓	



1. Rusin et al., Dentin Permeability of a New Protective Coating Material. J. Dent. Res. 87 (Spec Iss A): #1041, 2008.
 2. Rusin et al., Demineralization Protection of a New Protective Coating. J. Dent. Res. 87 (Spec Iss B): #627, 2008.
 3. 3M ESPE internal data

Preventive Care from 3M ESPE

Vanish™ XT Extended Contact Varnish is easy to use and does not require the use of a rubber dam. To learn more about using Vanish XT for protecting enamel surfaces and for patients with orthodontic brackets, visit www.3MESPE.com/preventivecare or contact 3M ESPE Customer Care at 800-634-2249.

Vanish™ XT Extended Contact Varnish Exposed Root Surface Sensitivity Application



1. Clean the tooth surface



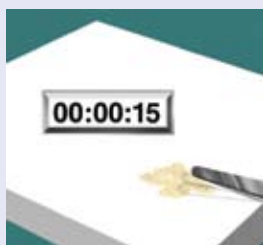
2. Rinse with water



3. Remove excess, pooled water



4. Dispense onto mixing pad



5. Mix for 15 seconds
(2.5 min. working time)



6. Apply thin layer to tooth surface



7. Light cure for 20 seconds



8. Wipe the coating with a moist cotton applicator

Vanish™ XT Extended Contact Varnish



Item #	Product Information
12148	Vanish™ XT Extended Contact Varnish 1 - 10g Clicker™ Dispenser

Customer Care Center: 1-800-634-2249 www.3MESPE.com

3M ESPE

Dental Products

3M Center
Building 275-2SE-03
St. Paul, MN 55144-1000
U.S.A.
1-800-634-2249

3M Canada

Post Office Box 5757
London, Ontario N6A 4T1
Canada
1-888-363-3685

Please recycle.
Printed in U.S.A.
© 3M 2008.
All rights reserved.

3M, ESPE, Clicker and Vanish are trademarks of 3M or 3M ESPE AG. Used under license in Canada. Duraphat, Seal & Protect, Calm-it and Gluma are not trademarks of 3M.

70-2013-0148-1